



Installing the Dallas DS2490 USB Adapter

All Cansec products, which support the Dallas DS2490 adapter, load the required drivers for operation. This document provides detailed instruction for completing the installation phase of this USB device.

1. Software Installation

Never attempt to plug the USB adapter into an available USB port until the associated Cansec product has been installed. The following products provide driver support for the DS2490 adapter.

- Smartlock Ultralite
- Smartlock Connect
- Smartlock Pro

2. Driver Installation

Once software installation has been completed, plug the USB adapter into a free USB socket. Do not attempt to use a USB hub interface. Driver installation occurs when the device is first detected by the system and not all USB hubs work reliably with the DS2490. For this reason, it is important to connect directly to a motherboard USB socket to ensure that the driver installation completes properly. If you mistakenly plugged the adapter in prior to software installation, see the section *Uninstalling the DS2490* before proceeding.

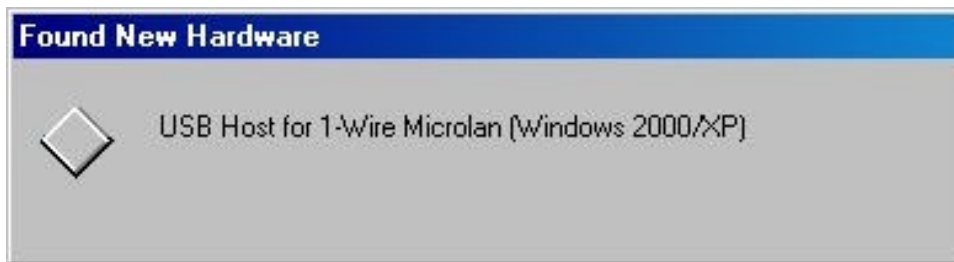
What happens next is determined by the version of Windows you are installing the device under. Sample installation scenarios are presented below for Windows 98, Windows 2000, and Windows XP.

3. Windows 98/ME

When the DS2490 is inserted for the very first time, Windows will respond with a new device found popup window.



After a brief interval correct identification of the USB device should take place.



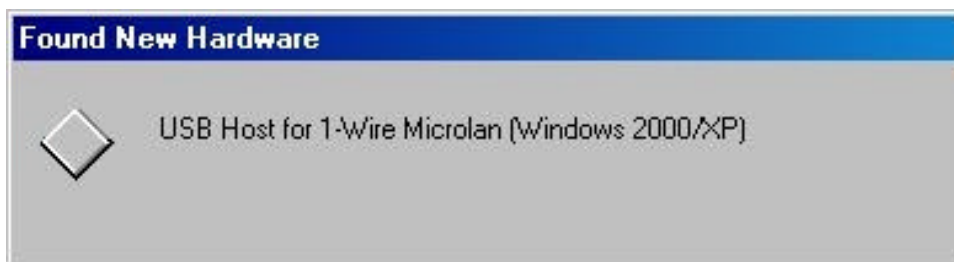
Once identified, the driver will load automatically and the adapter should be ready for use.

4. Windows 2000

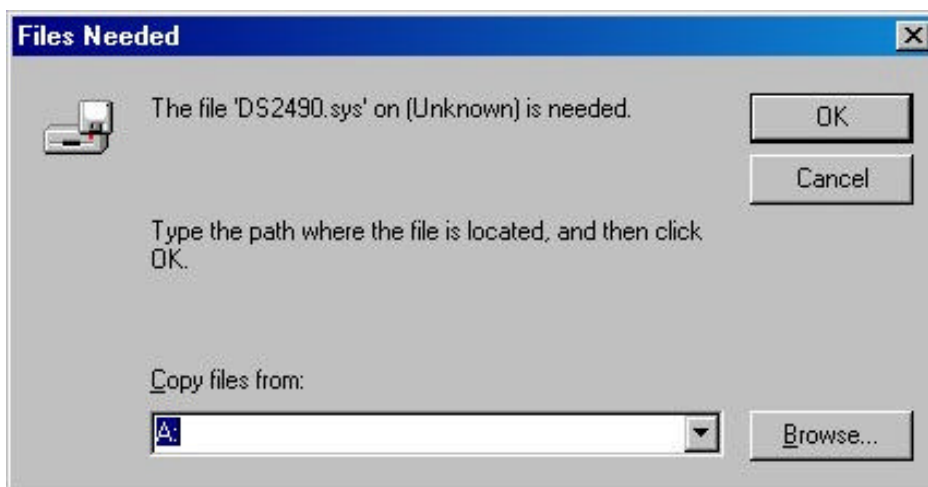
When the DS2490 is inserted for the very first time, Windows will respond with a new device found popup window.



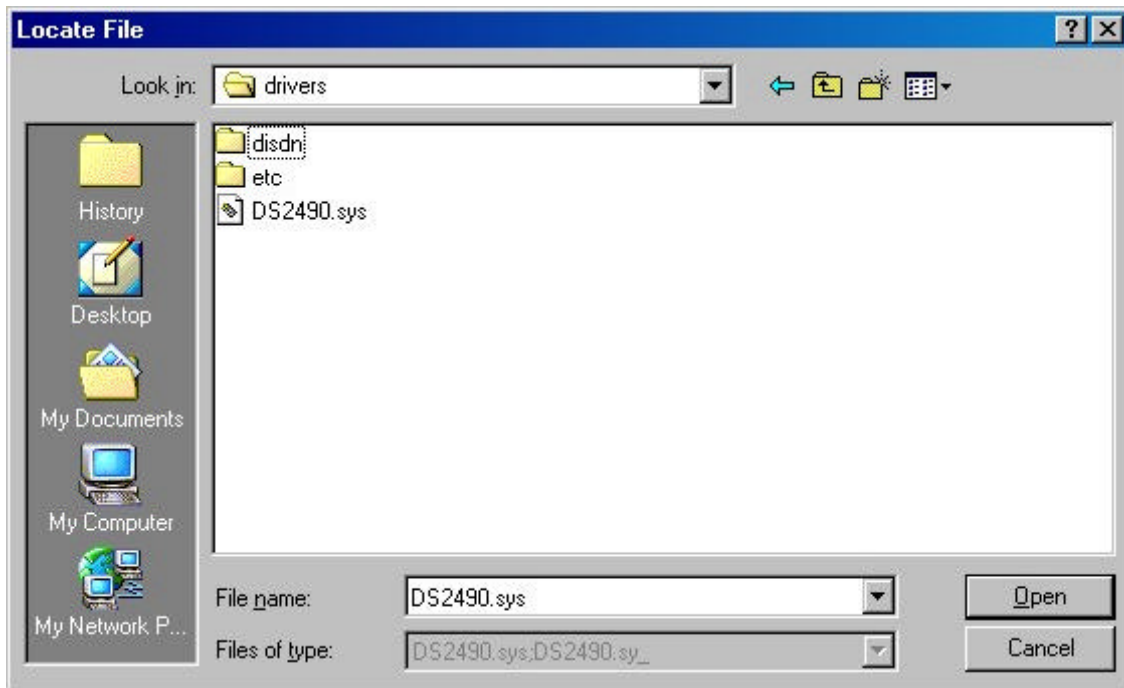
After a brief interval correct identification of the USB device should take place.



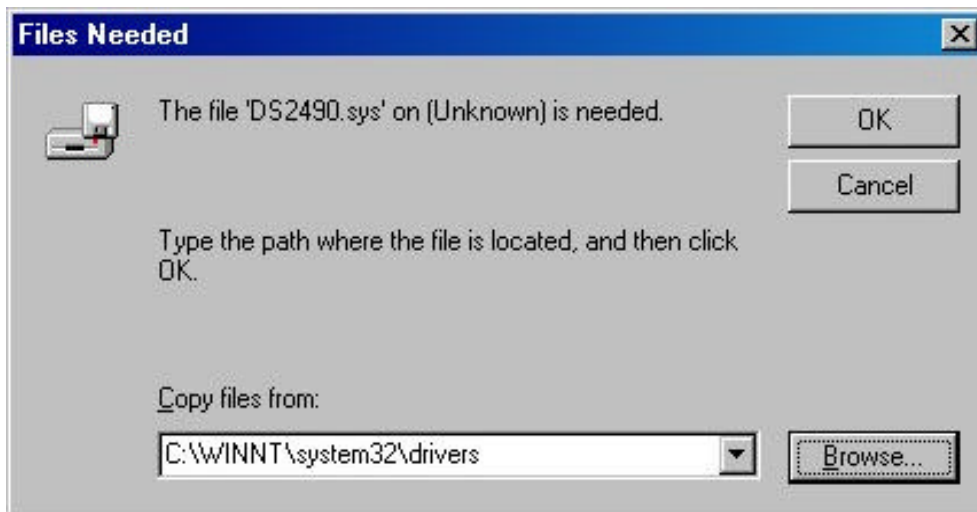
If Windows is unable to locate the driver, it will prompt for the driver location as follows.



In all cases, the driver file *DS2490.sys* will have been installed in the *drivers* directory located under *C:\Winnt\system32*. Use the *Browse* button to change to the *drivers* directory.



The file *DS2490.sys* should be displayed in the directory list. Select *Open* to continue.



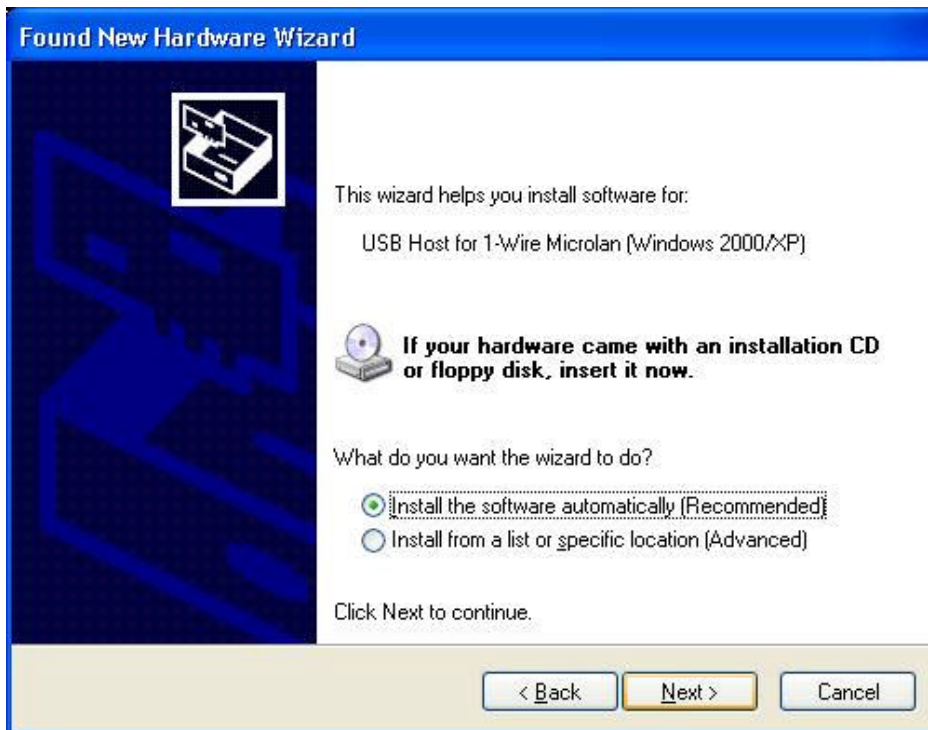
Select OK to complete driver installation.

5. Windows XP

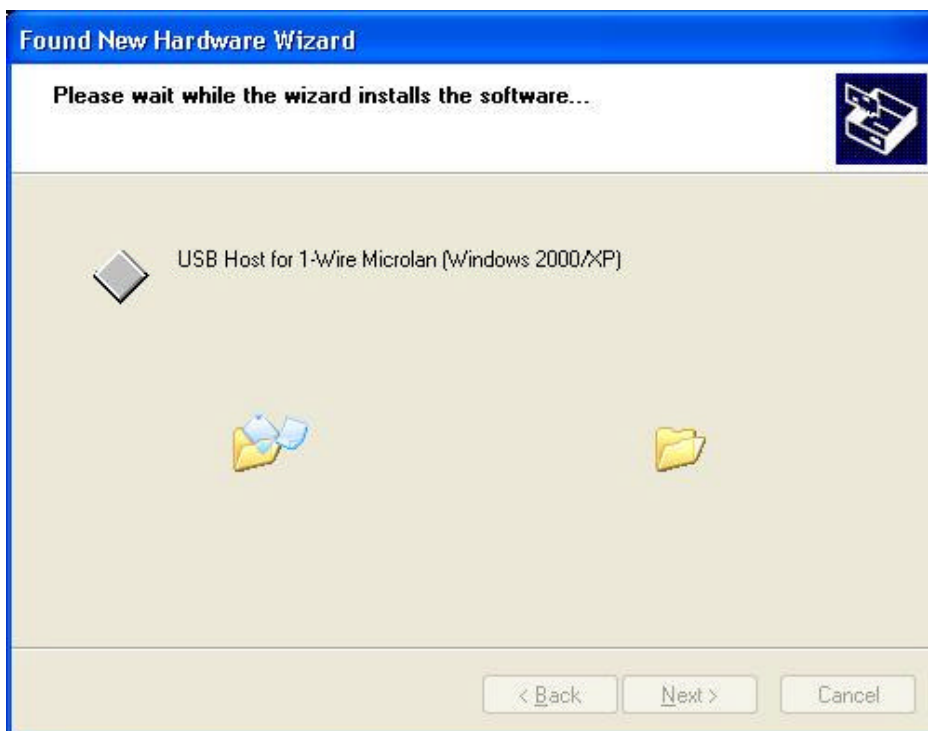
When the DS2490 is inserted for the very first time, Windows will respond briefly with a new device found popup window, followed immediately by the New Hardware Wizard setup screen



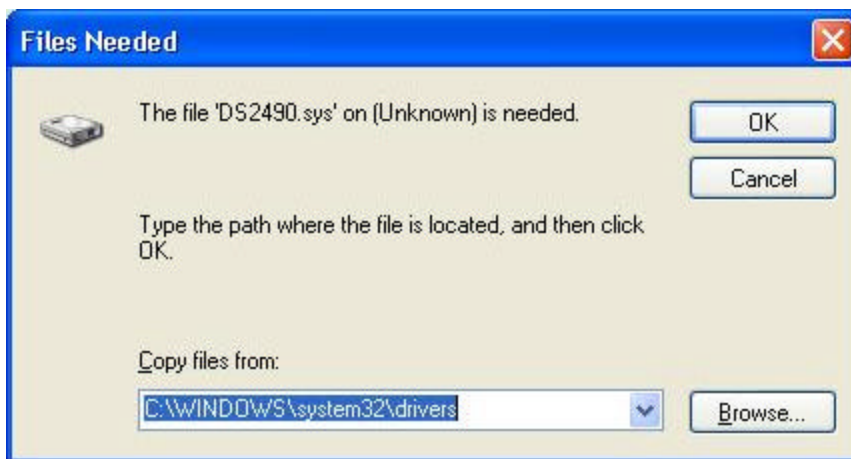
Windows Update does not support 1 Wire devices at this time and also requires an active Internet connection to function. For this reason, the *No, not at this time* option is chosen, followed by the *Next* button.



The driver installation window is then displayed. Select the *Install the software automatically (Recommended)* option and then the *Next* button.



Typically, Windows XP will be unable to locate the driver and the following screen will be displayed



In this case, simply choose the `C:\WINDOWS\system32\drivers` selection from the drop list box, or browse to that location using the *Browse* button.



The driver should be successfully located and installed. Press the Finish button to complete the process.

6. Special Consideration for USB Installation

The following additional points are noted in the Dallas Semiconductor device driver documentation and maybe applicable in some cases.

- Unplug any 1-Wire USB devices during installation to allow the device driver to be updated.
- If a 1-Wire USB device has previously been used on the PC, then a RE-BOOT must be done after installation to recognize the new device driver.
- If the PC has never had a 1-Wire USB device on it, then plug it in right after installation to complete the USB install. If it is not recognized, then RE-BOOT and try again.
- If auto-detect cannot locate the USB device driver (DS2490.SYS), then browse to it in <windows>\system32\drivers.

7. Driver Files and Locations

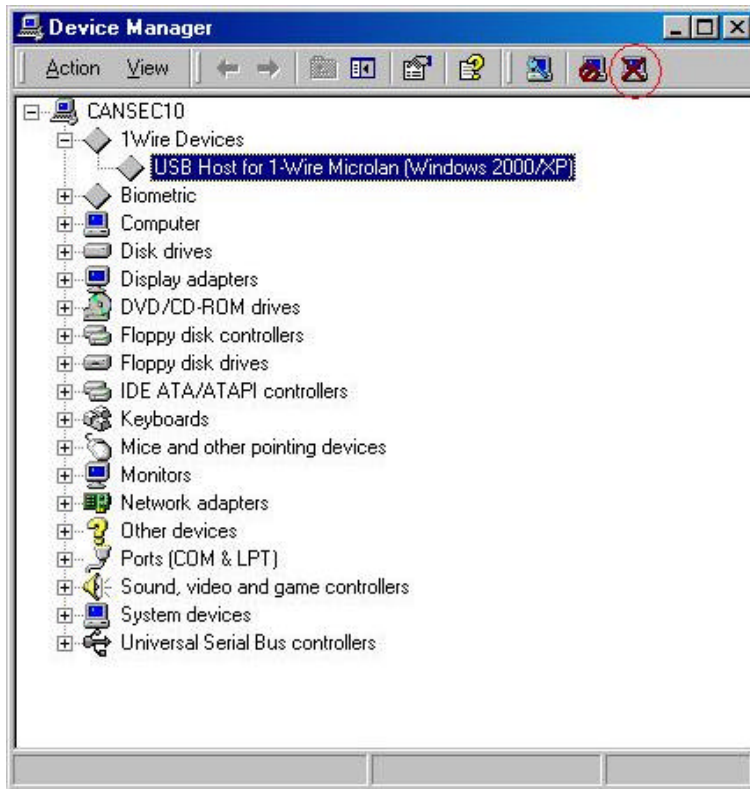
The following driver and support files are loaded during installation of one of the above-mentioned products.

Windows 98, ME, XP	
Location	Files(s)
C:\Windows\Inf	DS2490.inf
C:\Windows\system32 C:\Windows\system32	ib90usb.dll ibfs32.dll
C:\Windows\system32\drivers	DS2490.sys

Windows 2000	
Location	Files(s)
C:\WINNT\Inf	DS2490.inf
C:\WINNT\system32 C:\WINNT\system32	ib90usb.dll ibfs32.dll
C:\WINNT\system32\drivers	DS2490.sys

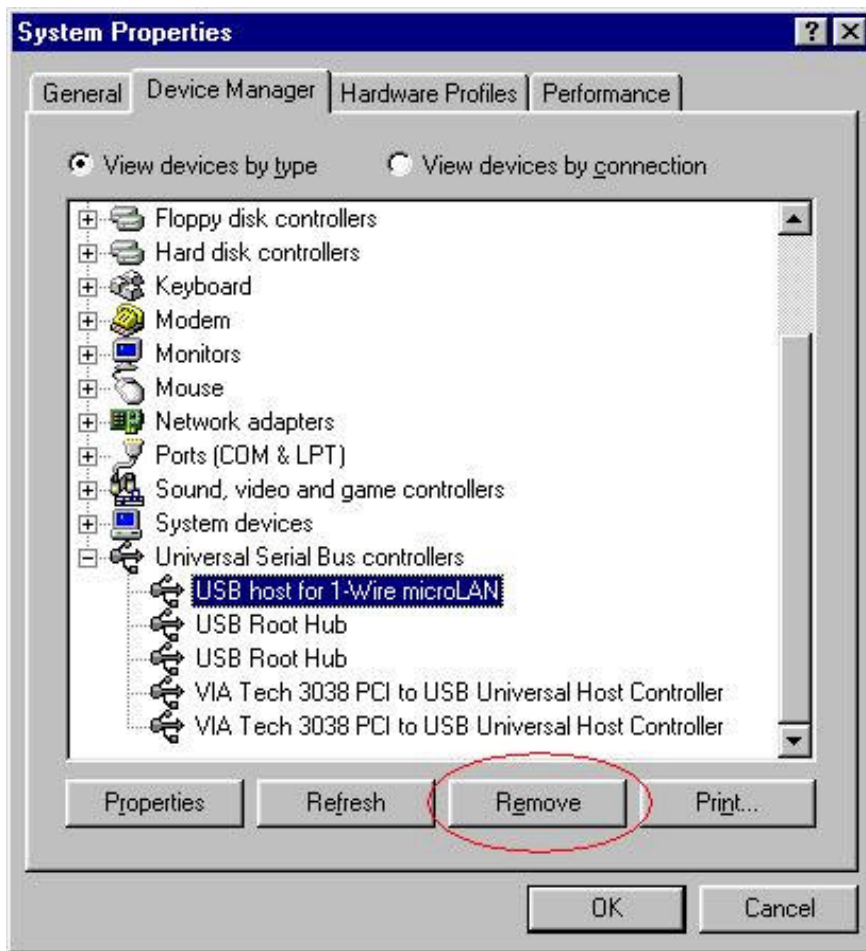
8. Uninstalling the DS2490

Uninstalling the DS2490 USB adapter is performed via the Windows Device Manager. Removal requires that the device be plugged in first so that it is accessible from Device Manager's list. In both Windows 2000 and XP, the DS2490 is displayed as shown below.



Highlight the device as shown above and press the remove button (circled in red). Windows will prompt with a confirmation dialog and if OK is selected, the device is uninstalled from the computer. A reboot maybe required at this point.





Windows 98 and ME locate the device under the *Universal Serial Bus controllers* collection. As with Windows 2000 and XP, highlight the device and press the *Remove* button to uninstall it.